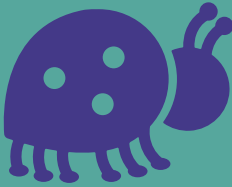


# Ladybirds

Private Day Nursery & Pre-School



## A safe, caring & positive environment in which your child can flourish.



Based in Methley, Leeds, with easy access to the motorway network, Ladybirds Private Day Nursery offers high quality, flexible childcare and education for children aged 0-5.

Every child is completely unique, which is why our highly-qualified staff carefully plan the nursery's activities to meet their individual needs. We form strong, happy bonds with all our children so they have the confidence they need to become happy little learners.



### Why Choose Ladybirds Nursery?

- Happy & friendly 'home from home' atmosphere.
- Well equipped play rooms offering fun and educational activities.
- Fresh, healthy, nutritious meals prepared on site by our nursery chef.
- Long serving, experienced staff.
- Four separate garden areas - one with an allotment for our budding gardeners.
- Fabulous sensory room.
- Wrap around service with Methley Primary School.
- Safe, secure environment with all staff DBS checked plus CCTV & secure entry.
- All inclusive - our full fees include nappies, wipes, milk, meals and sunscreen!

For further details call us today on  
**03330 919988**

or email: [fct.ladybirds@justchildcare.co.uk](mailto:fct.ladybirds@justchildcare.co.uk)

St. Oswalds Centre, Churchside, Methley, Leeds, LS26 9BJ

Ask us for further information about 30 Hours Free Childcare!



Visit our website: [www.ladybirds-nursery.co.uk](http://www.ladybirds-nursery.co.uk)

# Fee Guide

Valid from 1st April 2023

Our fees reflect our ongoing commitment to providing the very best nursery care around and the continuous improvement of our facilities, staff and education programmes that benefit the children in our care.

Full Time Weekly Rate	Daily 7:30am - 6:00pm	Morning 7:30am - 1:00pm	Afternoon 1:00pm - 6:00pm
£305.00	£63.00	£42.75	£37.50

**Registration Fee:** £75.00 (non-refundable) **Refundable Key Fob Deposit:** £10.00  
10% discount off eldest child's nursery fees for siblings.

Universal 15 hours free childcare entitlement is available to all 3 and 4 year olds. 2 year old free childcare entitlement is available subject to eligibility. Extended 30 hours free childcare entitlement is available for most working parents of 3 and 4 year olds, the term after their third birthday.

Your free childcare entitlement from the government is only applied to the 'care' element of your invoice and does not cover meals which will be charged at morning session £6.85/afternoon session £5.85 and consumables which will be charged at morning session £0.80/afternoon session £0.80.

Fees are payable in advance on the 1st of the month. Fees are not refundable for any periods of absence.  
**Note:** This guide replaces all previously issued fee guides.



## Key Information

### About Us

We are Just Childcare Limited t/a Ladybirds Private Day Nursery. We are a limited company registered in England with company number 05095704, and our registered office is located at Ridgway House, Progress Way, Denton, Manchester M34 2GP.

### Settling in Sessions

Once you have registered with our nursery, we'll contact you within a few weeks of your little one's nursery start date to arrange 'settling in sessions'. We know that leaving your child at nursery for the first time can be incredibly difficult so to help you through this we offer 'settling in sessions'. This involves you spending time with your child and their key person at nursery, before popping out for a short time to allow your little one to interact with their new surroundings.

You can do this a number of times until you feel confident about your child staying with us for a full session.

### Nursery Opening Times

The nursery's standard hours are 7.30am-6pm. The nursery is closed for all Bank Holidays. The nursery will close at 4pm on Christmas Eve or the closest day to this date and re-open on the next working day.

### Registration

To apply for a place for your child at the nursery you must complete a registration form and return it to the nursery.

We will check our availability and let you know in writing if we can accommodate your requirements. On receipt of £75 non-refundable registration fee your nursery place will be fully secured.

### Payments

Fees are payable in advance on the 1st of the month and are calculated on an annual basis (52 weeks) then divided by 12 to give you equal monthly payments. We'll send you an invoice for your nursery sessions at least three working days before the start of each calendar month letting you know how much is due for that month.

The fees for each month must be paid no later than the first day of the relevant month.

Fees are not refundable for any periods of absence. All Bank Holidays are chargeable.

The first month's fees must be paid by bank transfer but all other fees must be paid by direct debit (excluding expected voucher or Tax Free Childcare payments) unless we have agreed you can pay by a different method.

Our bank details are as follows:

**Account Name:** Just Childcare Limited t/a Ladybirds Private Day Nursery  
**Sort Code:** 01-10-01  
**Account Number:** 72526858

**For further information speak to our family care team today!**

  
**Ladybirds**  
Private Day Nursery & Pre-School

Church Side, Methley, Leeds LS26 9BJ. Tel: 03330 919988

OUR MISSION



TO

NURTURE,  
*inspire*

AND

HAVE

**FUN**

EVERY DAY 

# Babies 0-2 years



Babies absolutely love discovering the world around them.

We provide a safe, stimulating and caring environment where they can do just that.

Our baby area allows your little one to learn at their own pace in a stimulating environment; exploring new textures, tastes and smells, splashing about during messy play and having outdoor adventures in our secure garden.

The lovely soft surroundings enable your little one to wriggle, crawl and take those exciting first steps safely with encouragement from our caring team. When it's naptime your baby can snuggle up in cosy cots amongst soothing surroundings, before waking up to begin a brand new adventure.

Our toys and resources are placed at your baby's eye-level, so they can make their own decisions about how they would like to play each day. This wonderful environment is where your baby will make their very first friends, enjoying the company of children their own age and bonding with their key person.

We care for our babies with a ratio of 1 team member to every 3 babies. This ensures your little one receives all the care, attention and cuddles they need to thrive.





# Toddlers 2-3 years

Creating magical experiences every day, helping your toddler to learn through play.

When your child joins our toddler group they will be learning in an environment that's perfect for children of their age, with all kinds of exciting resources available to them in our playrooms and garden.

At this stage learning will become a little more structured but will still be very much focussed around play. Your child's key person will introduce your little one to letters and numbers with games, messy play, roleplay, art and lots more activities designed to make learning fun.

Your toddler's natural energy and curiosity will be encouraged through daily adventures in our garden come rain or shine; enjoying picnics in the summer and building snowmen in the winter. Physical play will be a large part of each day, helping to keep your toddler healthy and happy.

Our toddlers are cared for with a staff to child ratio of 1 team member to every 5 children. This enables your child's key person to support their emotional and physical development whilst providing them with learning activities based on their unique likes, needs and interests.





# Pre-Schoolers 3-5 years



Children learn best when they're happy, engaged and having fun. That's why we'll always use your child's interests as inspiration for our learning activities.

When your child joins our Preschool, our focus will be making sure they are 'school ready' with all the skills they need for their next adventure at primary school.

As well as learning literacy and mathematics, your little one will be cooking, gardening, dancing, den building and painting their way to being a happy and confident learner. Fun physical activities and outdoor play every day will benefit their physical and emotional wellbeing too.

Our qualified Pre-school team have a ratio of 1 team member per 8 children. Groups of this size allow your child to develop socially and learn to work with other children, whilst still receiving the care and attention they need to flourish during this crucial point in their learning journey.

Your child's education will cover all areas of the Early Years Foundation Stage (EYFS), so they will be fully prepared for primary school. We'll also help to make sure that you are ready for this next step; a child's first day at school is a proud day for a parent, but it can be a very emotional time too!

Ask us about



**Free Childcare**







## With you every step of the way.

### A Special Bond

When your child joins our nursery they will develop a very special bond with their key person. This person will be the friendly face you chat with about your child's development both at nursery and at home.

The key person approach means your child is being cared for by someone who knows all about their unique likes, interests and needs. They'll use this special bond to plan learning activities based around what inspires and excites your child.

Your child's key person will make sure you're always involved in your little one's learning journey, so we can all work together to give them the best possible start.

### Settling in nicely

Leaving your child at nursery for the first time can be incredibly difficult. To help you through this we offer free 'settling in sessions'. This involves you spending time with your child and their key person at nursery, before popping out for a short time to allow your little one to interact with their new surroundings.

You can do this a number of times until you feel confident about your child staying with us for a full session. We find this really helps parents and children to settle into nursery life!

## Our Curriculum

As an Ofsted registered nursery our curriculum follows the Early Years Foundation Stage (EYFS) framework.

The EYFS sets the standards for the care, learning and development of children from birth to 5 years, it is the same set of standards all schools, pre-schools, nurseries and reception classes must follow. Although 'EYFS' sounds very formal, it actually focuses on learning through exciting games and play. It allows our team to provide activities that are tailored to your child's unique likes and interests so that learning is always lots of fun!

Our learning activities cover the EYFS's 7 key areas:

1. Communication & Language
2. Physical Development
3. Personal, Social & Emotional Development
4. Literacy
5. Mathematics
6. Understanding the World
7. Expressive Arts & Design

## How will I be involved in my child's learning and development?

A positive relationship between you and our team means we can all work together to give your child the best possible start.

We work in partnership with our parents and carers by providing:

- Learning Book - A digital record of your child's learning journey during their time with us.
- Regular chats with your child's key person about their development at home and at nursery
- Parents evenings throughout the year
- Access to assessments, including a two year check meeting with our local Health Visitor



# Healthy Body Healthy Minds



## Babies

We provide formula milk as part of our nursery fees and are also very happy to take expressed milk if you are breastfeeding. If you would prefer, you can also pop in to breastfeed your little one at the nursery.

When it's time for your baby to move on to solids, we provide a varied seasonal menu filled with delicious and nutritious meals and snacks. Mealtimes at our nursery are always lovely social occasions, where your baby will be gently encouraged to try exciting new tastes and textures each day.

## Toddlers and Pre-School

Our qualified team are dedicated to making sure your little one enjoys a wide variety of tasty dishes in a homely environment.

Mealtimes at our nursery are always lovely social occasions, where conversation and laughter are actively encouraged. They are the perfect time to discuss the foods we enjoy most and why certain ingredients are good for us. We also use mealtimes to help develop your child's independence by encouraging them to serve themselves.

## Tasty tasty!

All of our meals are prepared in the nursery kitchen using fresh, locally sourced ingredients. Our Nursery Chef cooks a wide variety of tasty and well-balanced meals, which can be altered to meet any special dietary requirements.

- Fresh homemade food
- Healthy and delicious
- Varied seasonal menu
- Exciting tastes and textures
- Locally sourced ingredients
- Low in fat, salt and sugar



# Little Chefs in the making!

Your little one will get lots of opportunities to prepare their own healthy meals and snacks using fresh ingredients, helping them to understand where nutritious meals come from. Cooking helps children to measure, weigh and count their way to a healthy meal - a very important life skill.



Little Chefs

## Safe and Sound

The safety of your child is just as important to us as it is to you. We have the following procedures in place to keep them safe and sound.

- Secure door entry systems preventing unauthorised people from entering the nursery
- A registration system that means only people you have nominated can collect your child
- Highly-qualified staff with paediatric first aid and safeguarding training
- Enhanced DBS (Disclosure and Barring Service) checks on all staff members



## We look forward to seeing you soon!

You're bound to have lots of questions at this early stage in your childcare journey, and we hope this information has been a helpful start. Our friendly team are here to support you, so please do get in touch whenever you would like more information.

We know that choosing the right childcare for your little one is an important decision, so we'll never put any pressure on you to choose our nursery when you contact us.

If you would like to pop into the nursery for more information and to take a look around, you're very welcome to visit us without making an appointment. If you would like to book a visit instead, please use the online booking form on our website.

We can't wait to show you around our wonderful nursery!

**Just Childcare**

[www.justchildcare.co.uk](http://www.justchildcare.co.uk)



Ref: JC01